



Výnimočné školy

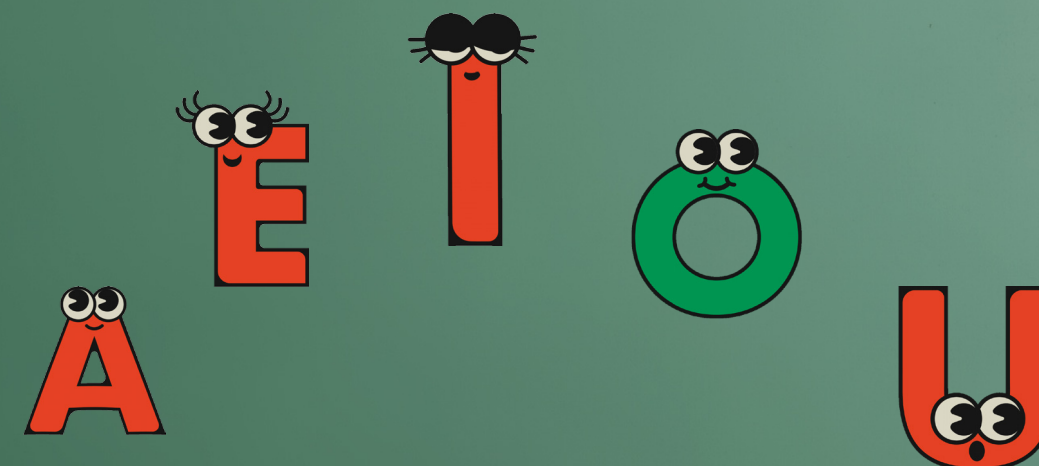
Zuzana Diová

Členy A/AN
základné pravidlo pre najmenších

A/ AN

What is it?

It is an **apple**.



What is it?

It is a **flower**.



an **apple** - **A** - podstatné meno
začína samohláskou

a **flower** - **F** - podstatné meno
začína spoluhláskou



1. Žiakom napíšeme na tabuľu príklady, Jeden pre použitie A a jeden AN. Využívame slovnú zásobu, ktorú poznajú. Snažíme sa ich naviesť na pravidlo, ktoré sa pri používaní uplatňuje.

2. Nehovoríme im hneď správnu odpoveď, ale pomôžeme si slovenčinou aby sme ich naviedli. Spýtame sa akým písmenkom začína slovíčko "apple"? Čo je to za písmenko v slovenčine? Od toho si odvodíme ďalšie samohlásky a dopíšeme si k uvedeným príkladom ďalšie.

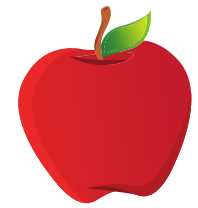
3. Následne môžeme pracovať s kartičkami. Nastrihané a zalaminované kartičky rozdáme žiakom. Najlepšie aby sme sedeli v polkruhu. Každý žiak má kartičku povie čo vidí na obrázku s použitím A alebo AN celou vetou.

What is it? It is an umbrella.

Navzájom sa kontrolujeme či hovoríme správne. Aktivitu môžeme využiť aj v rámci "learning stations" so štipcami. Žiaci pripínajú štipce k správnej odpovedi. Na jednom zo stanoviší.



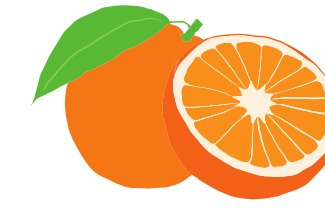
Zoznam slovíčok použitých na kartičkách



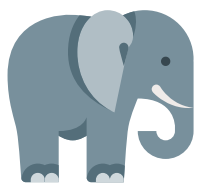
an apple



an angel



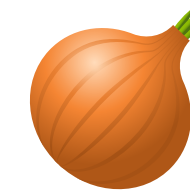
an orange



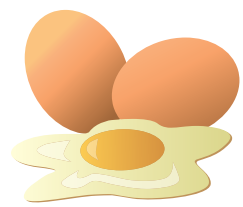
an elephant



an arm



an onion



an egg



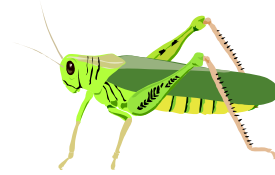
an ear



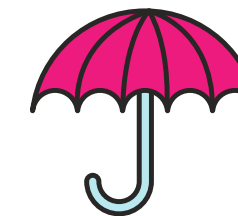
an owl



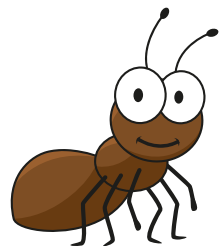
an alligator



an insect



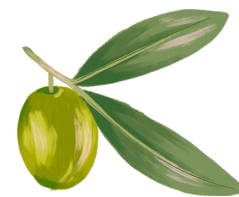
an umbrella



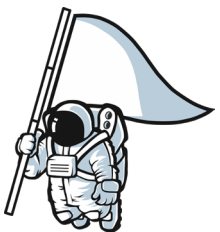
an ant



an ice



an olive



an astronaut



an ice cream



an avocado



an octopus



an eye

Zoznam slovíčok použitých na kartičkách



a taxi



a lorry



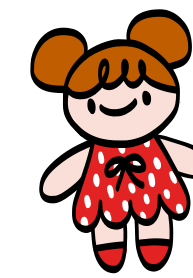
a teddy



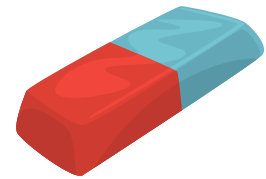
a book



a crayon



a doll



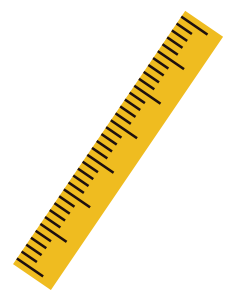
a rubber



a game



a car



a ruler



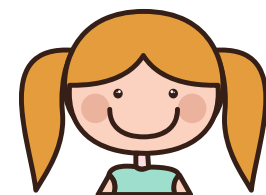
a boy



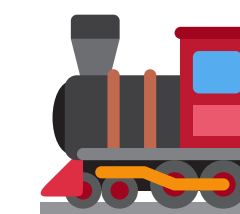
a bag



a chair



a girl



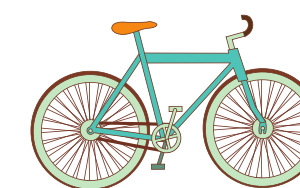
a train



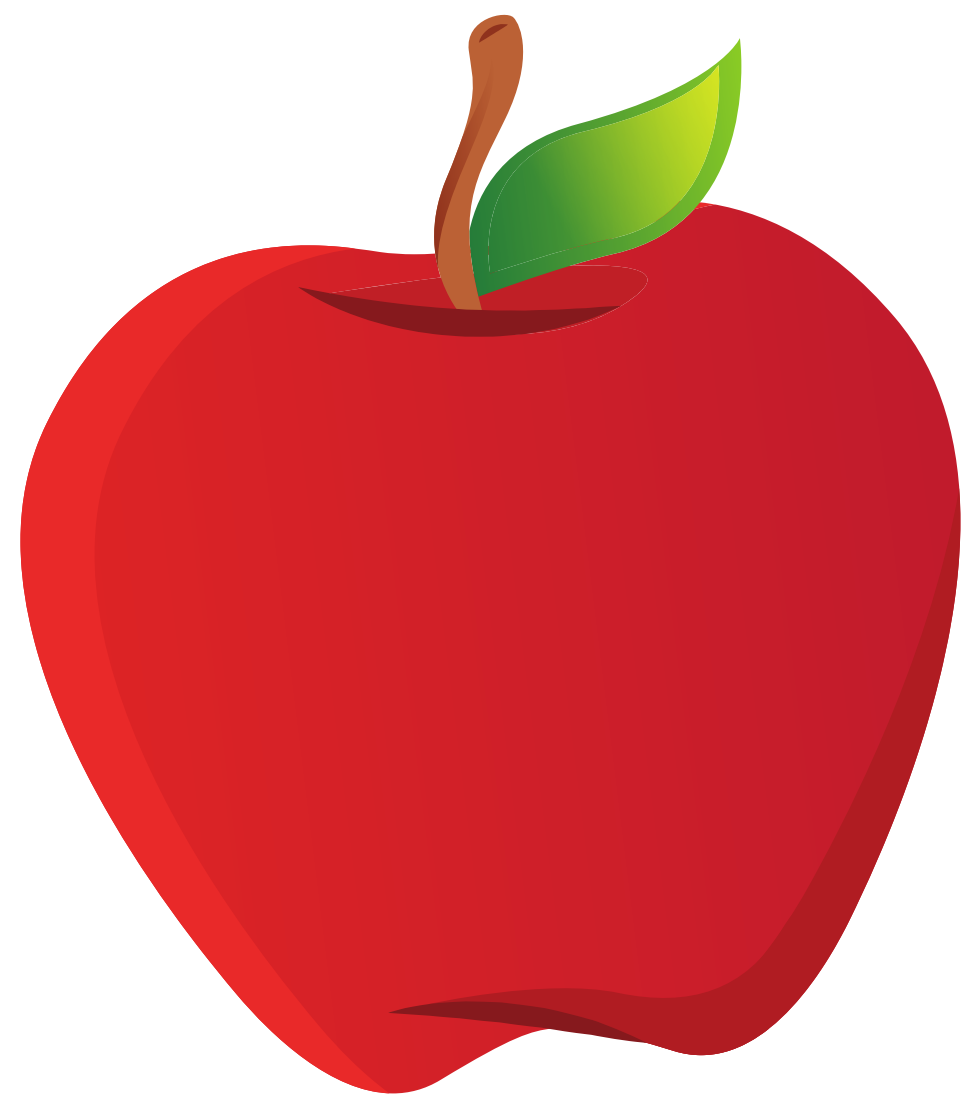
a boat



a computer

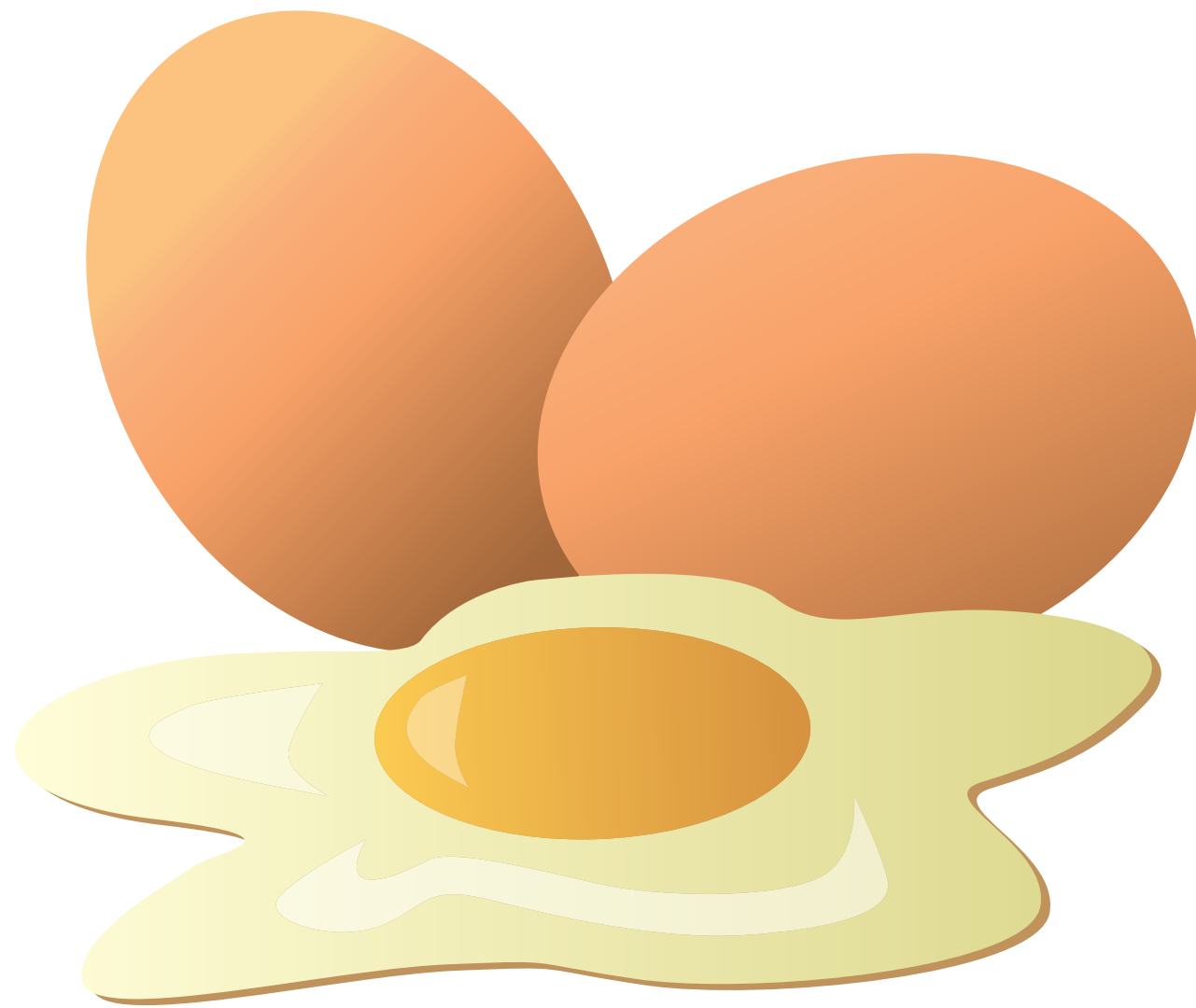


a bike



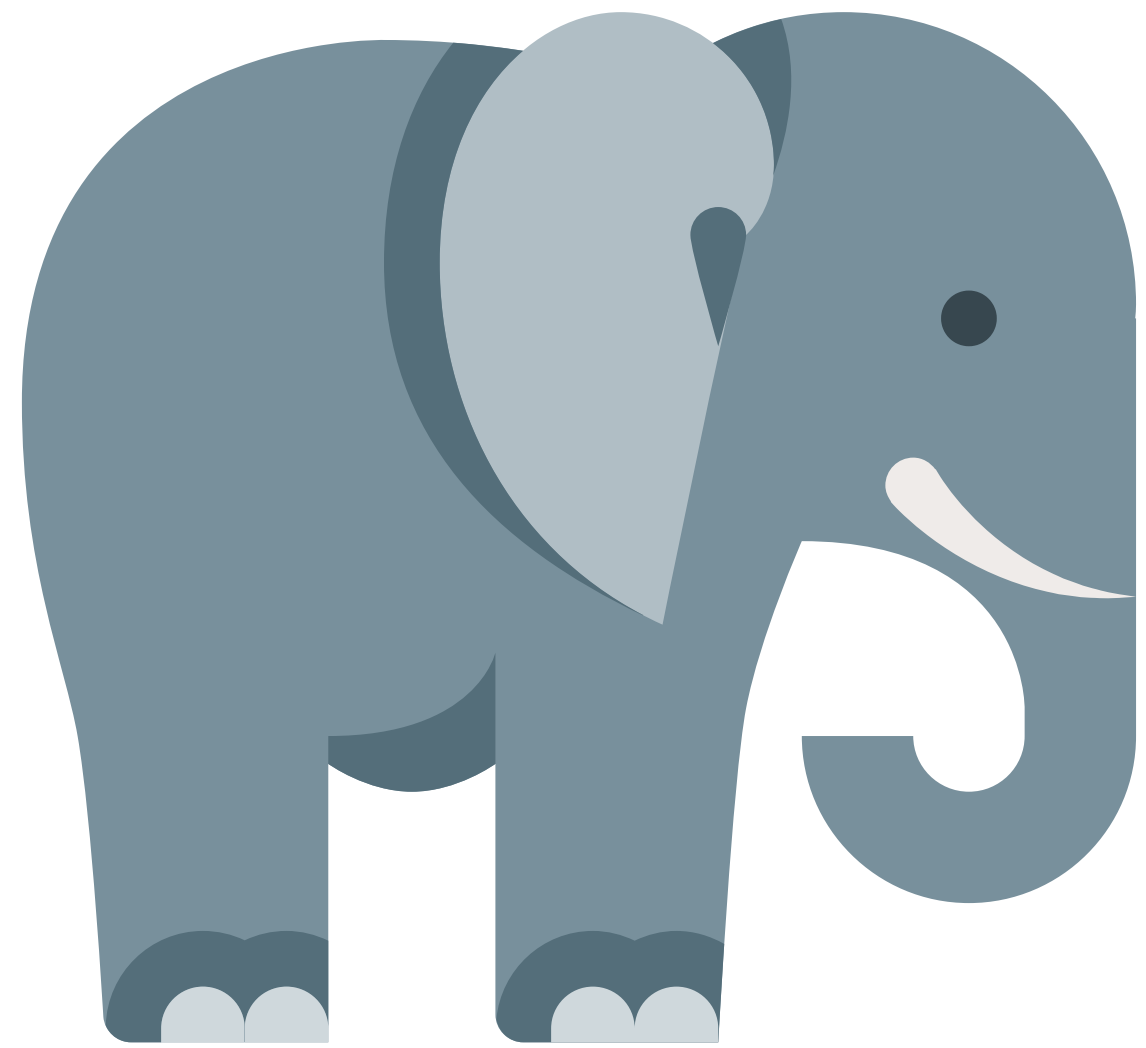
A

AN



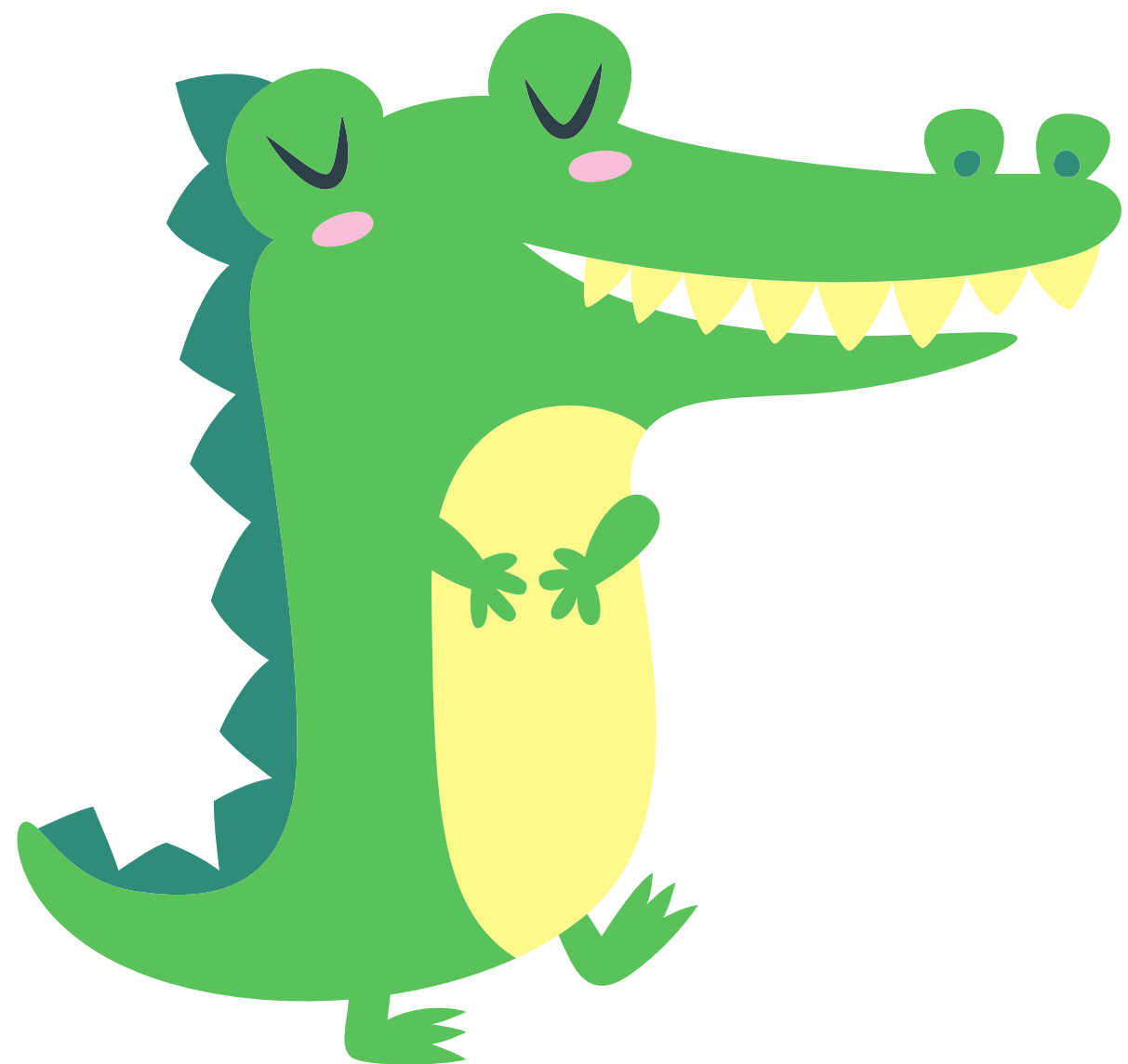
A

AN



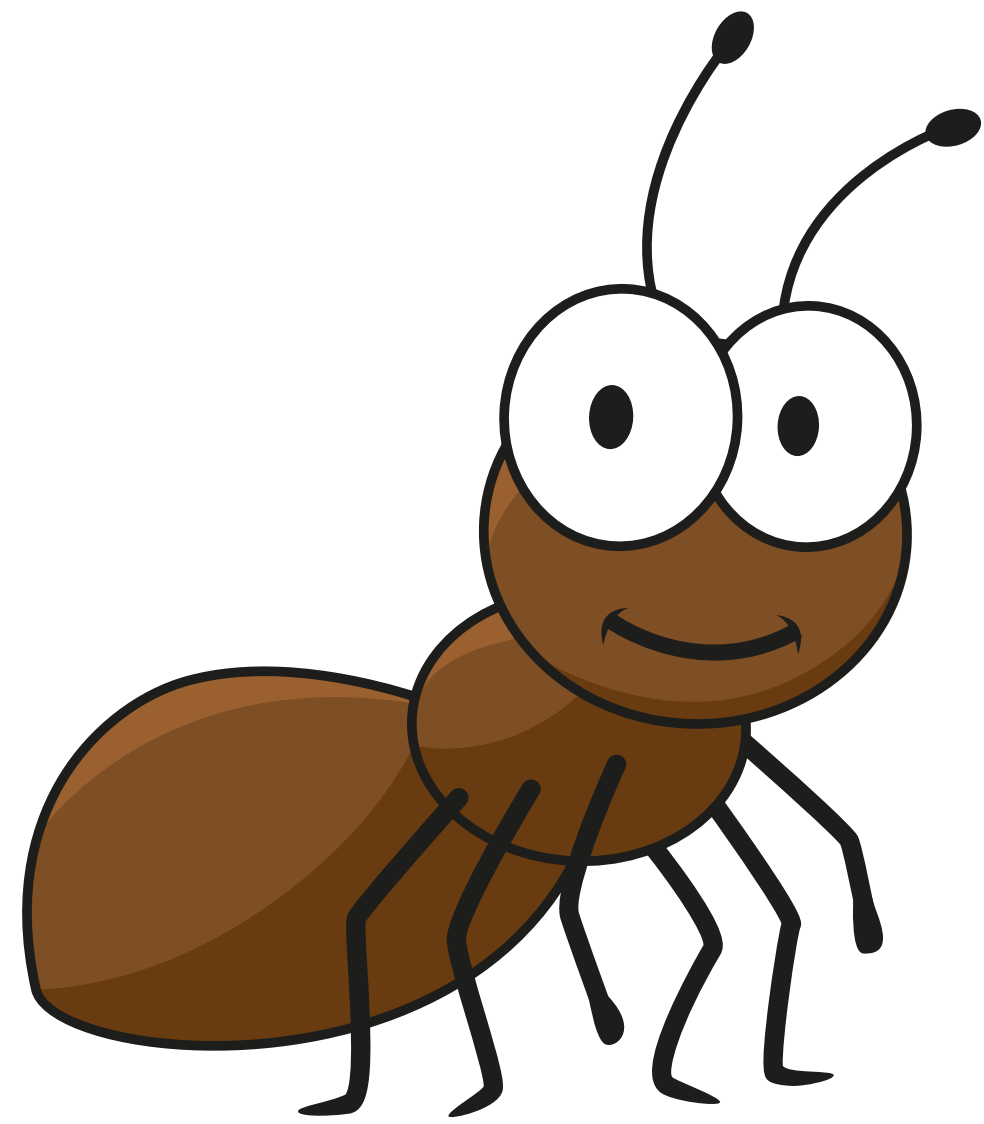
A

AN



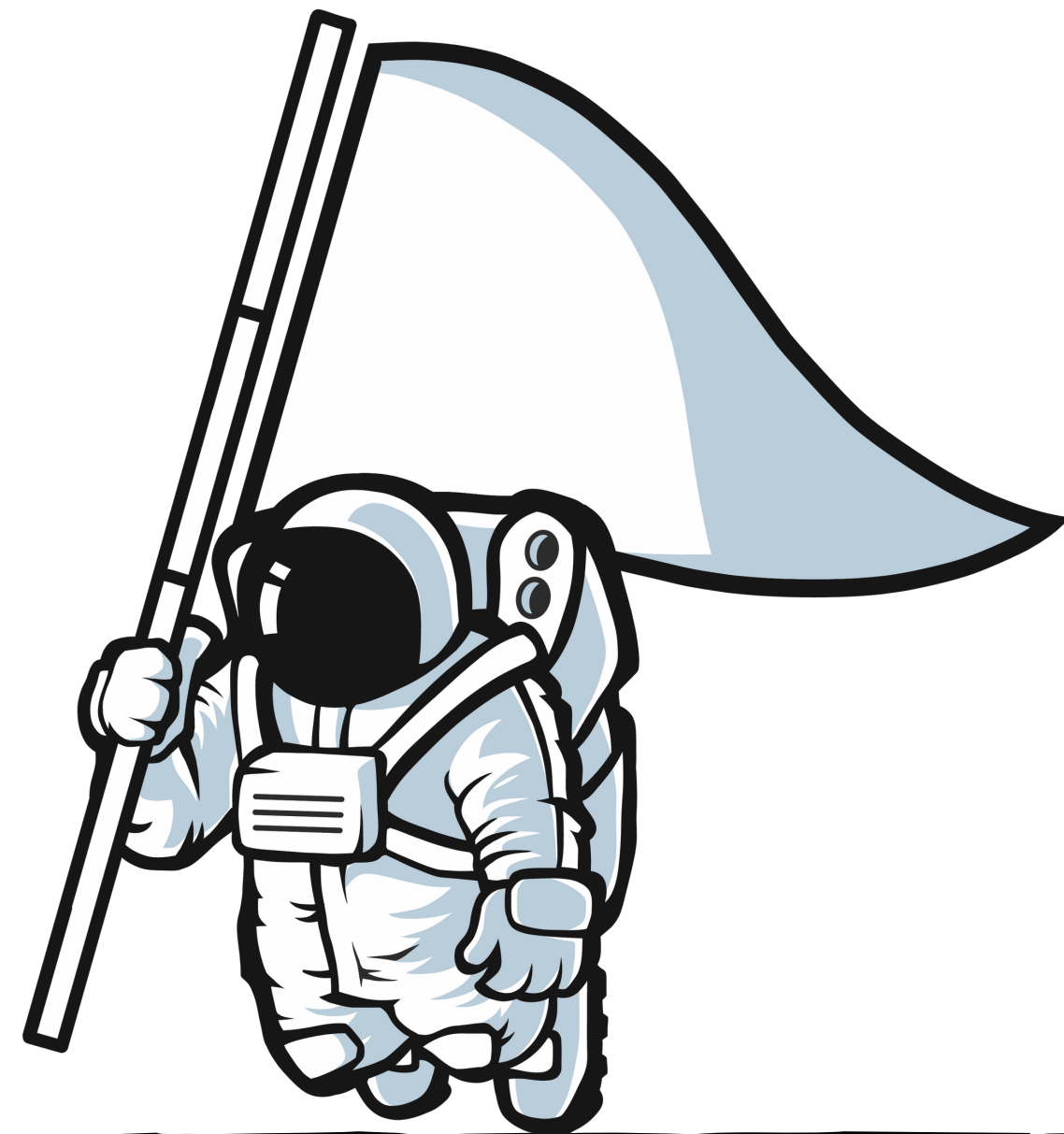
A

AN



A

AN



A

AN



A

AN



A

AN



A

AN



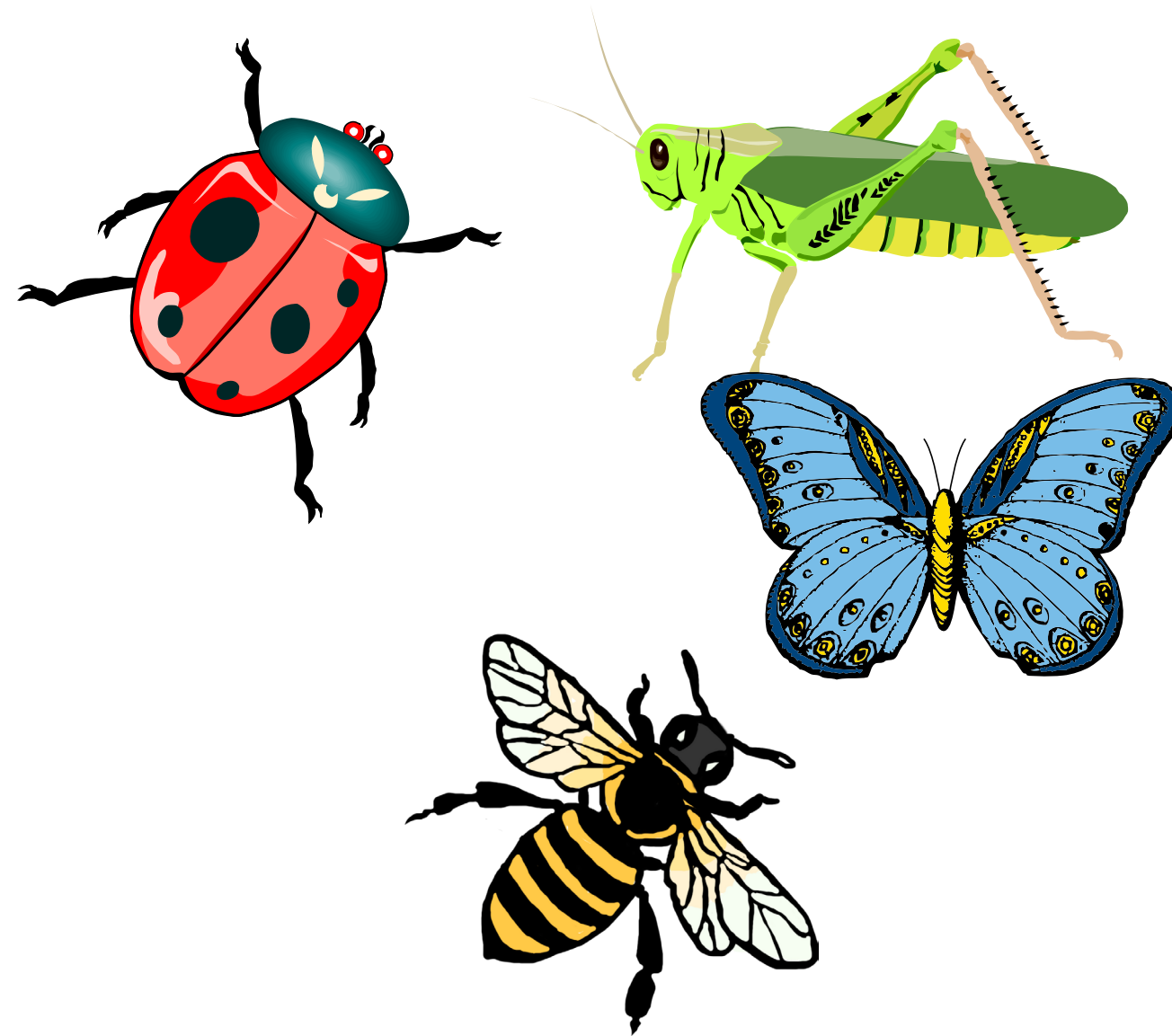
A

AN



A

AN



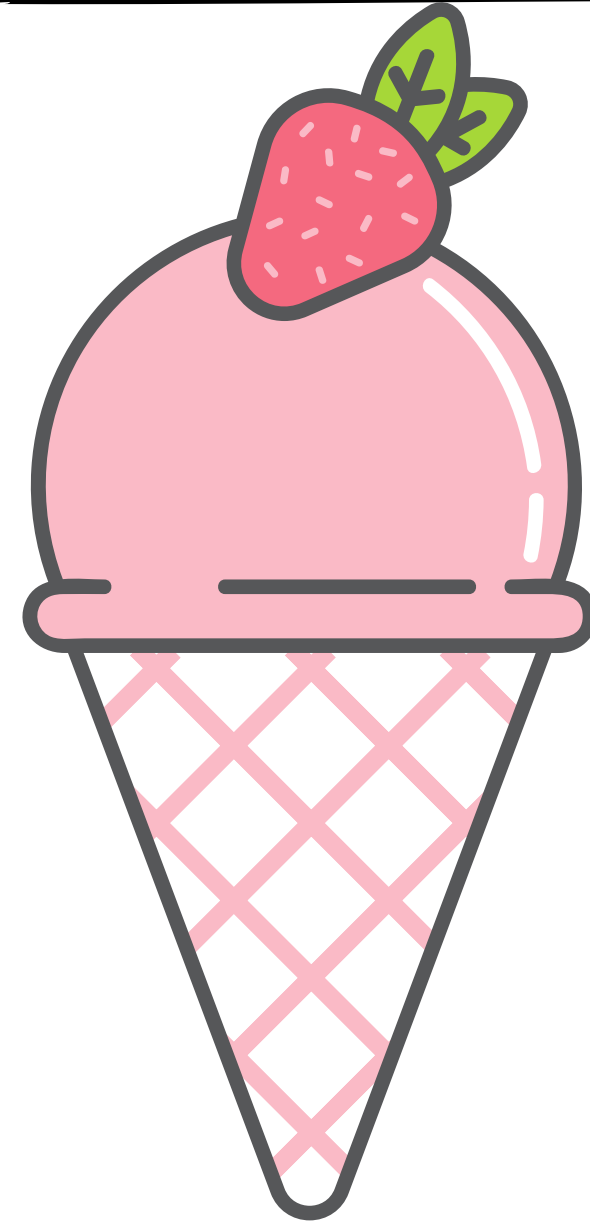
A

AN



A

AN



A

AN



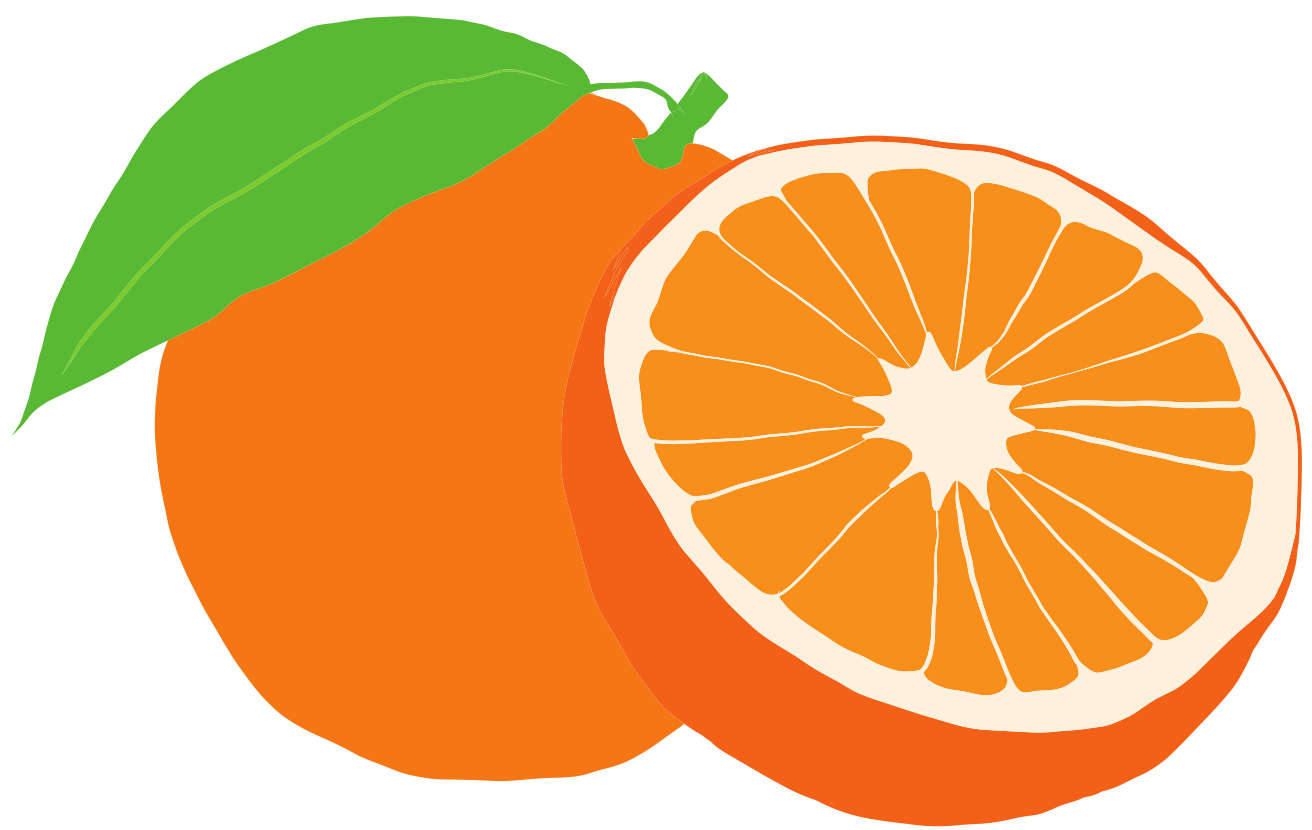
A

AN



A

AN



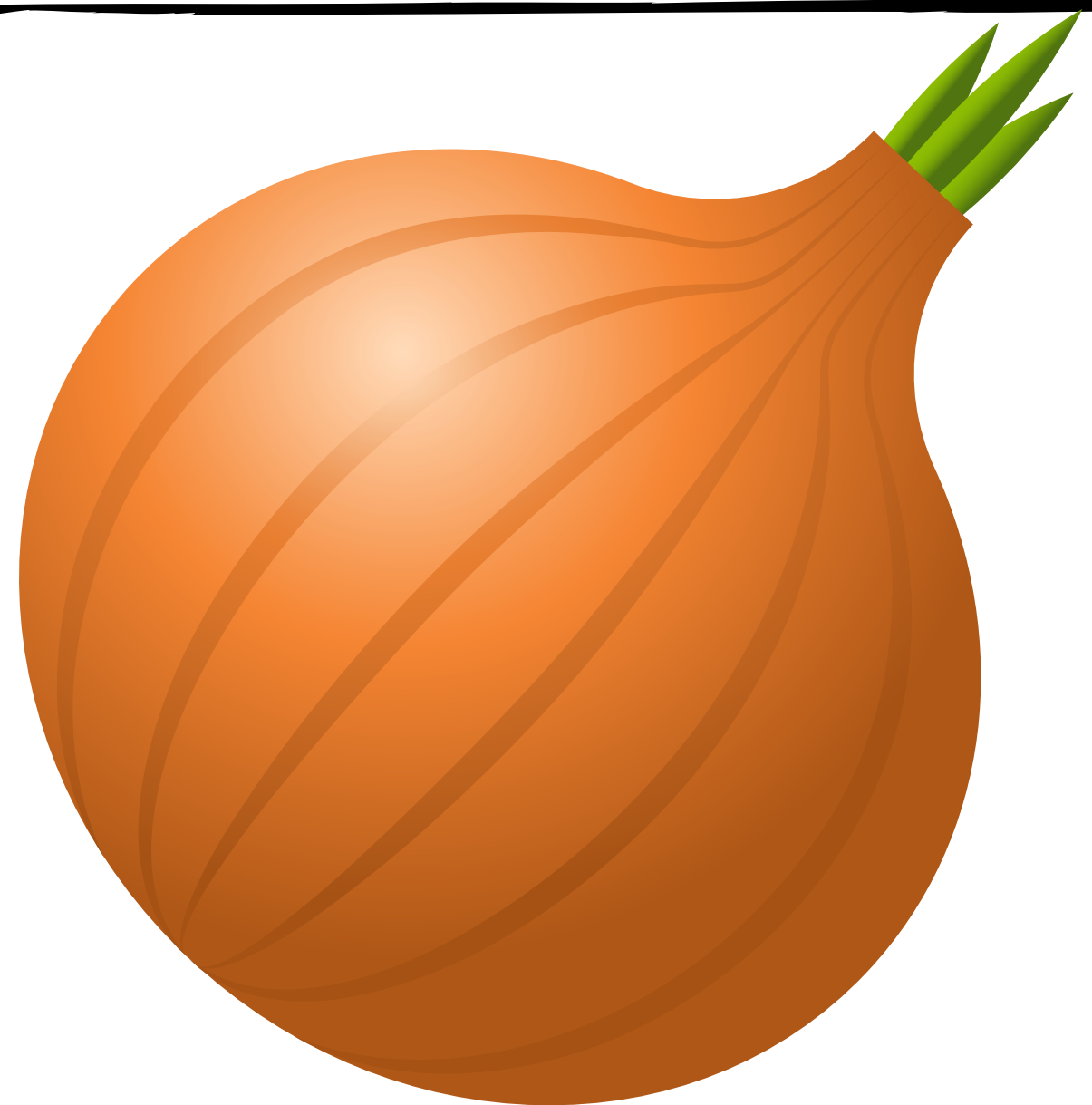
A

AN



A

AN



A

AN



A

AN



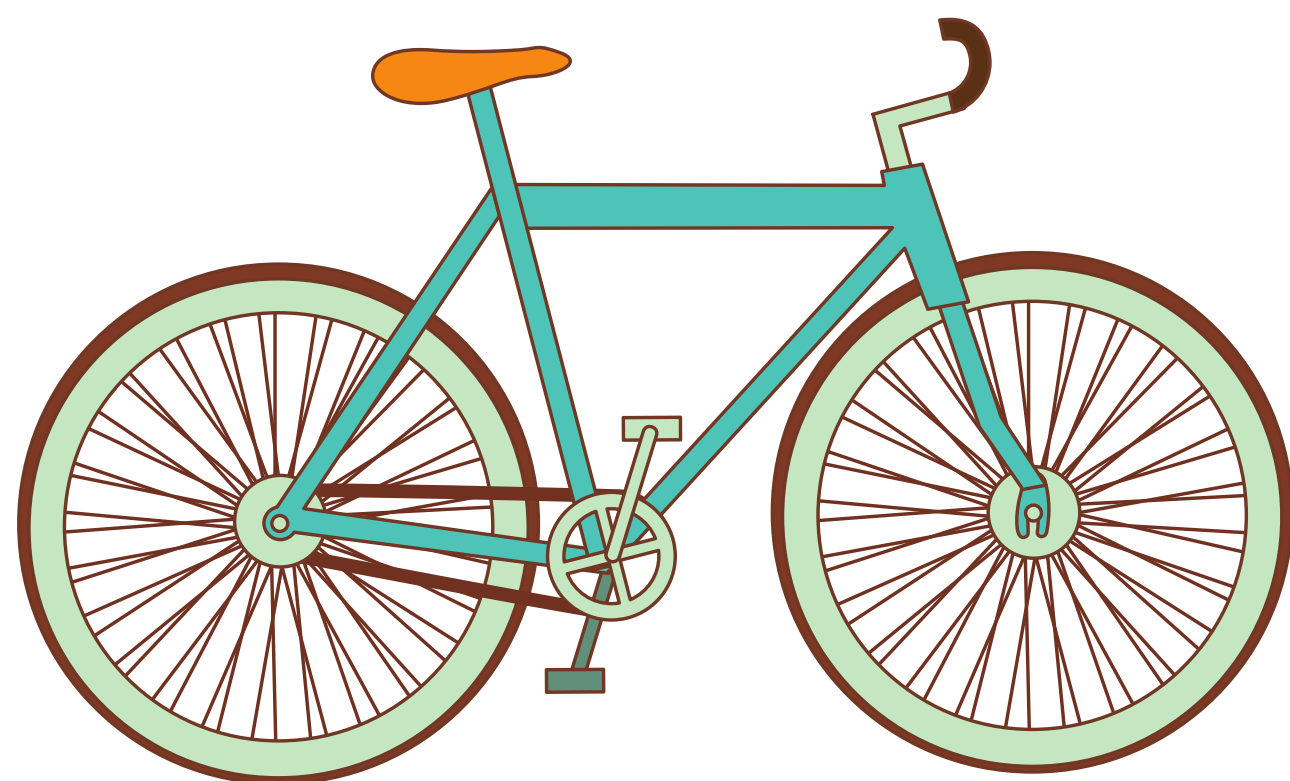
A

AN



A

AN



A

AN



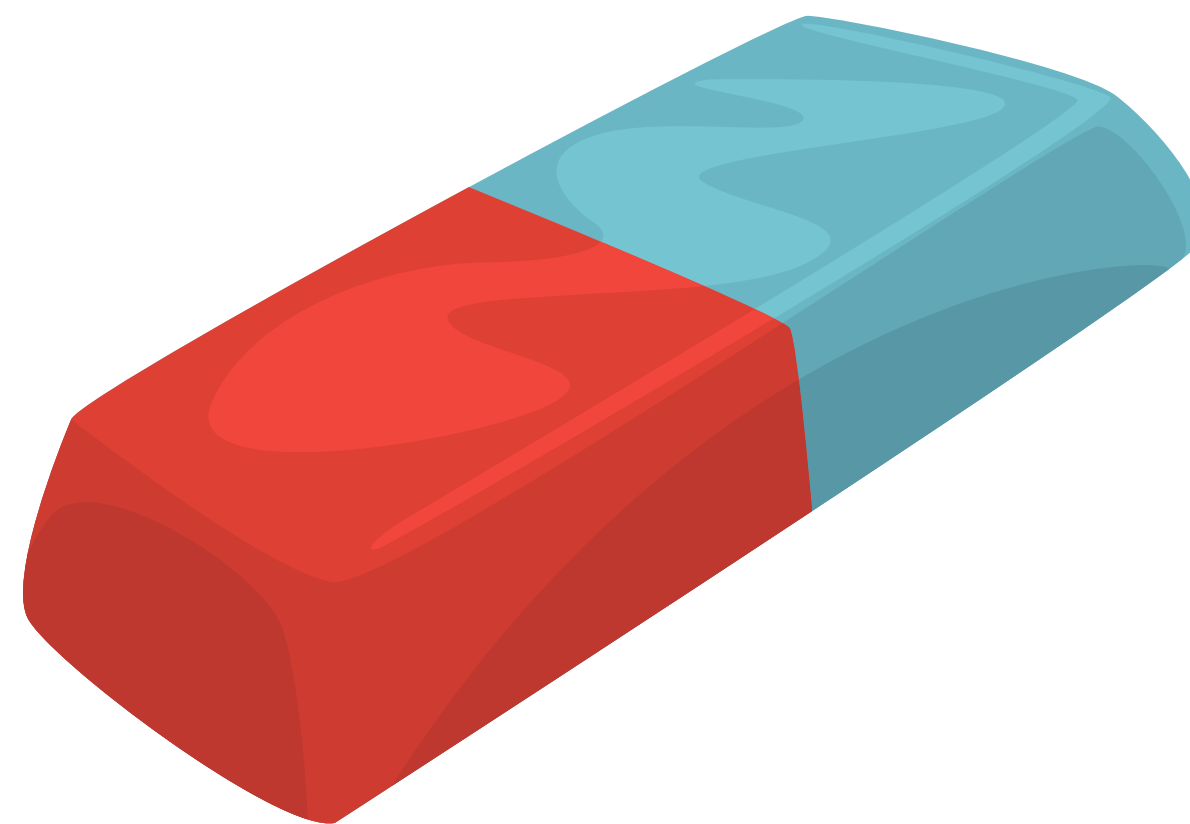
A

AN



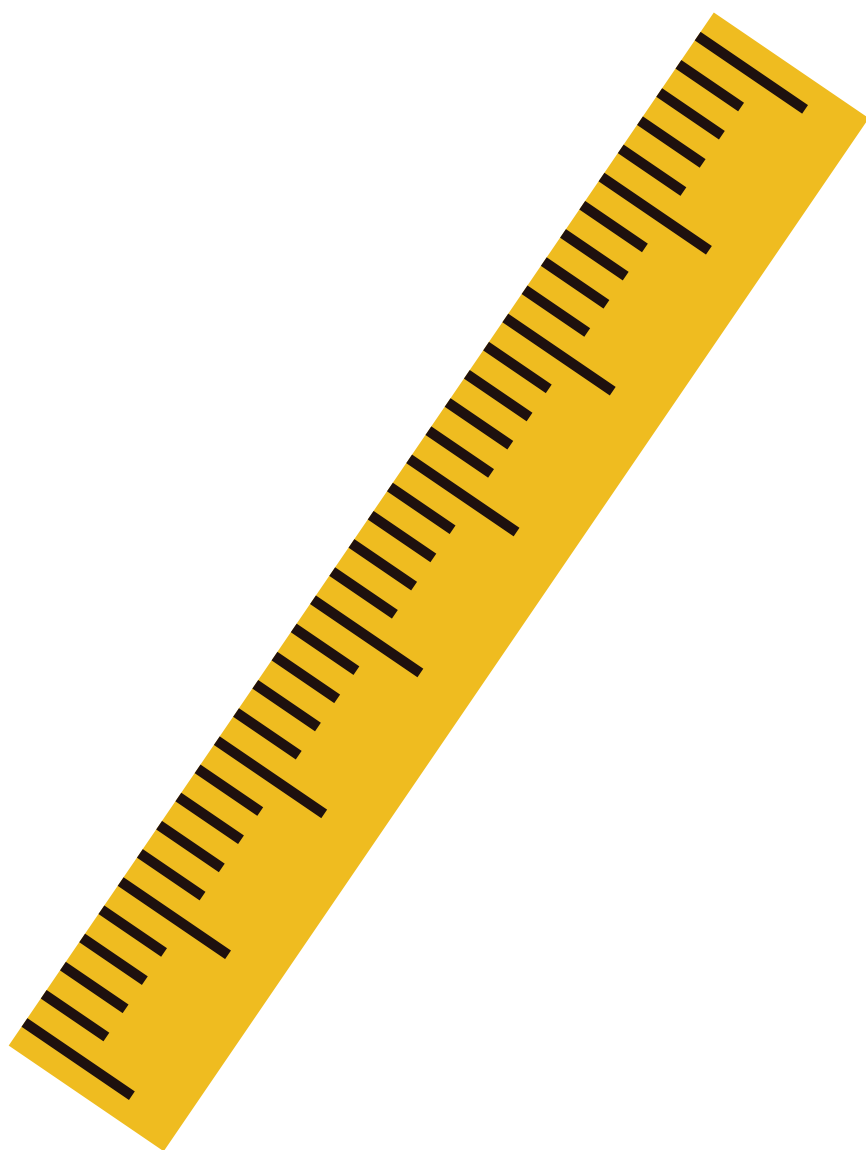
A

AN



A

AN



A

AN



A

AN



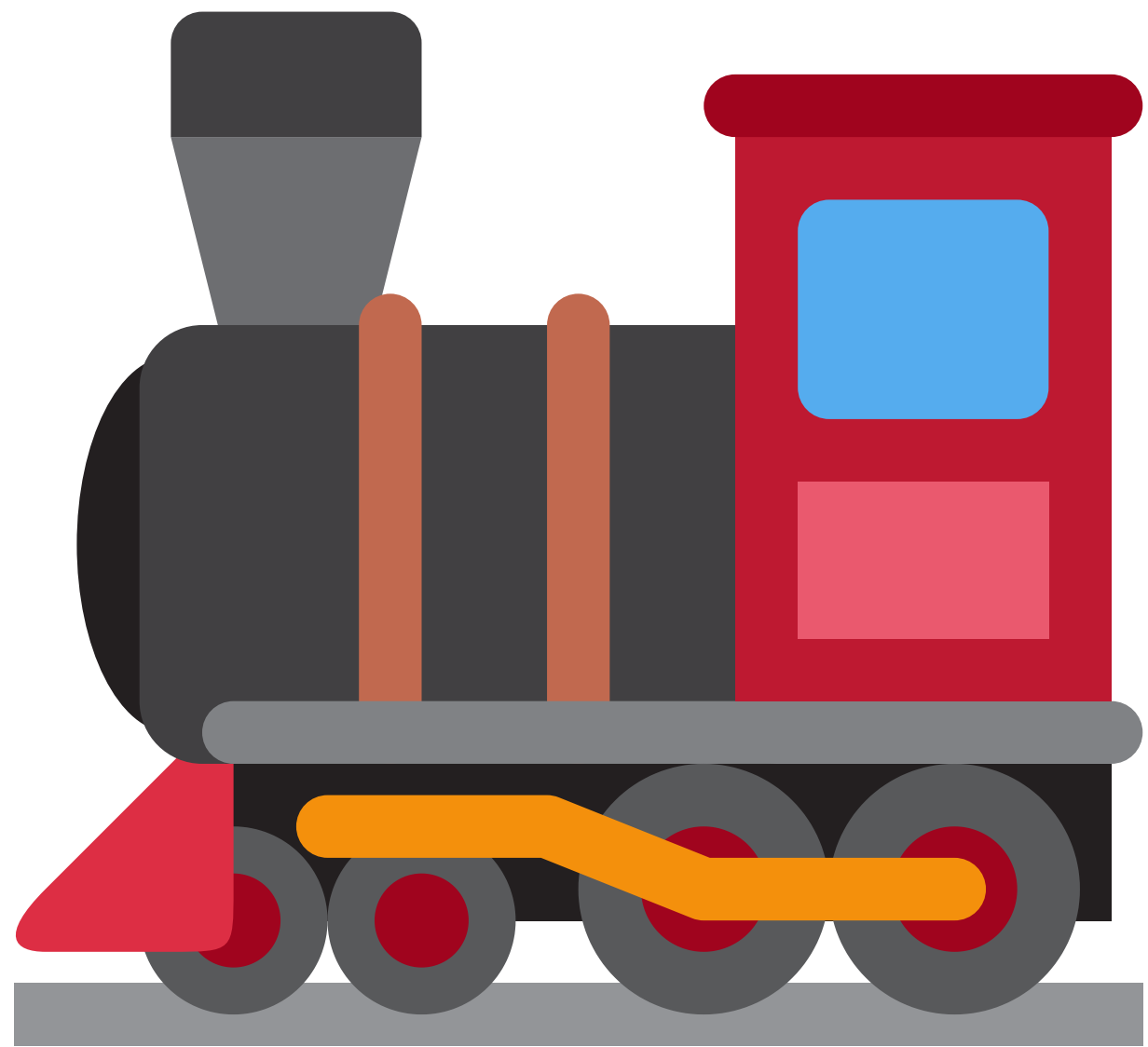
A

AN



A

AN



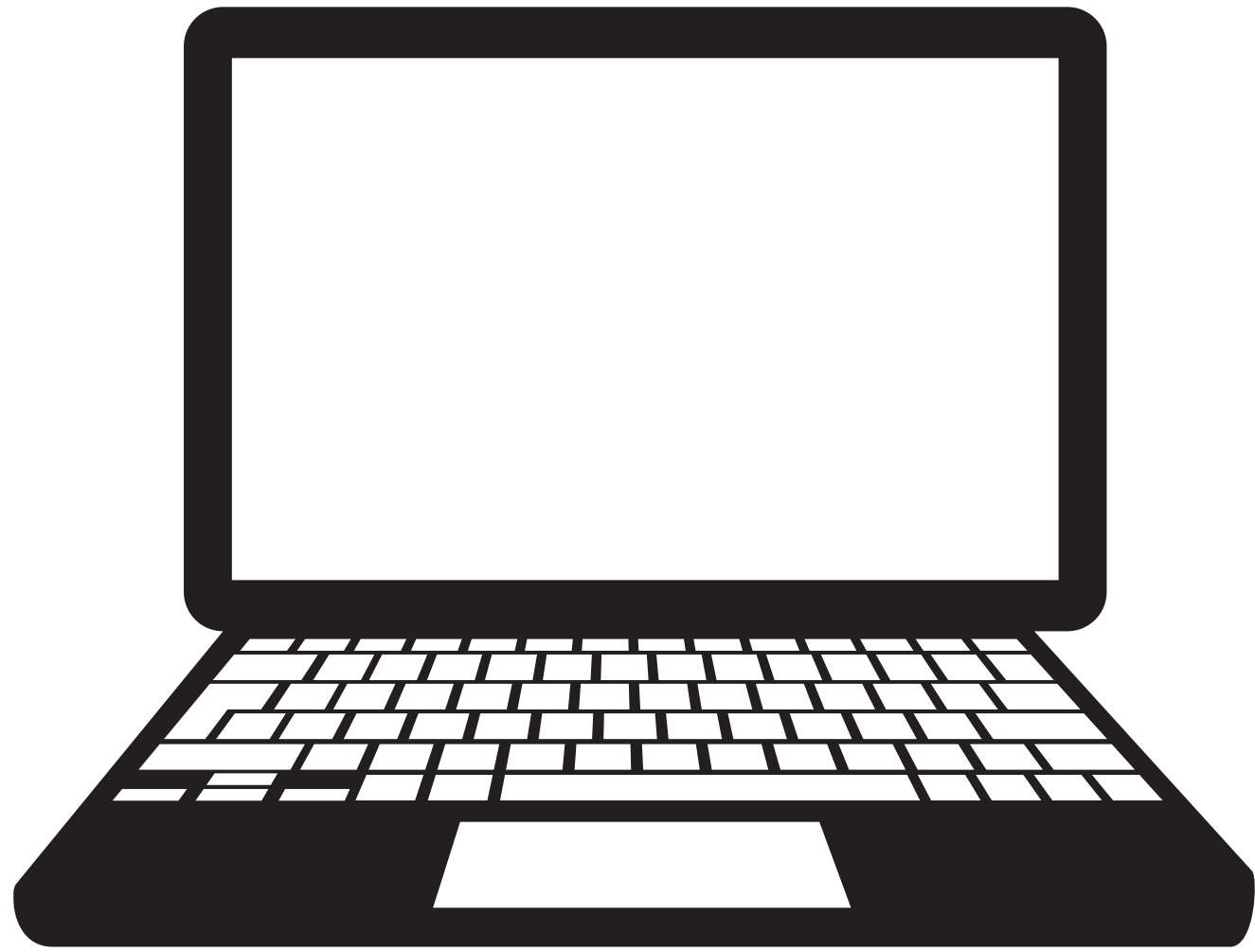
A

AN



A

AN



A

AN



A

AN



A

AN



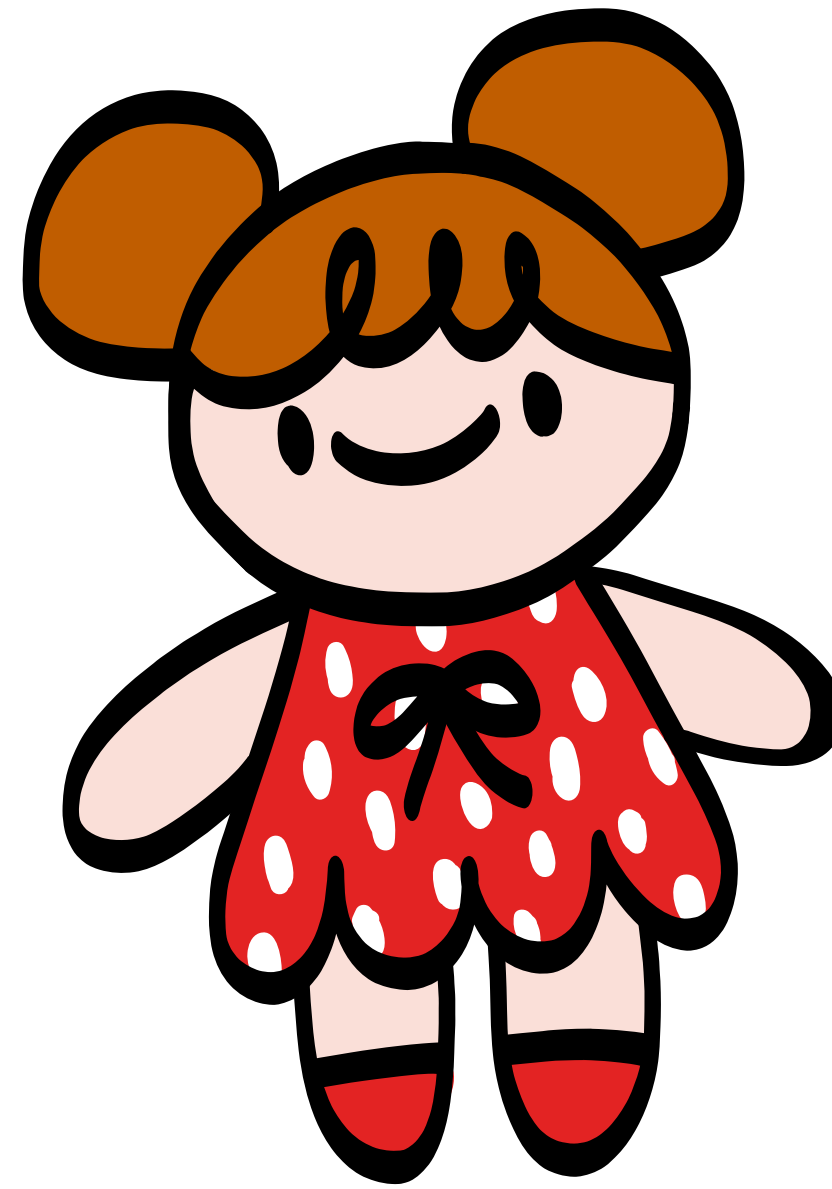
A

AN



A

AN



A

AN